

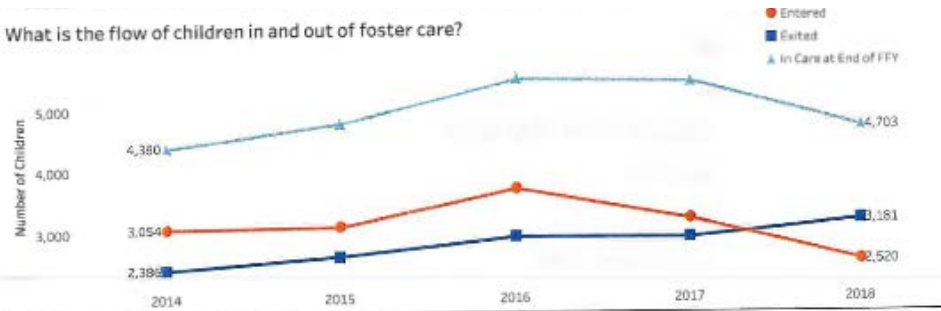


# MISSISSIPPI FAMILY FIRST INITIATIVE

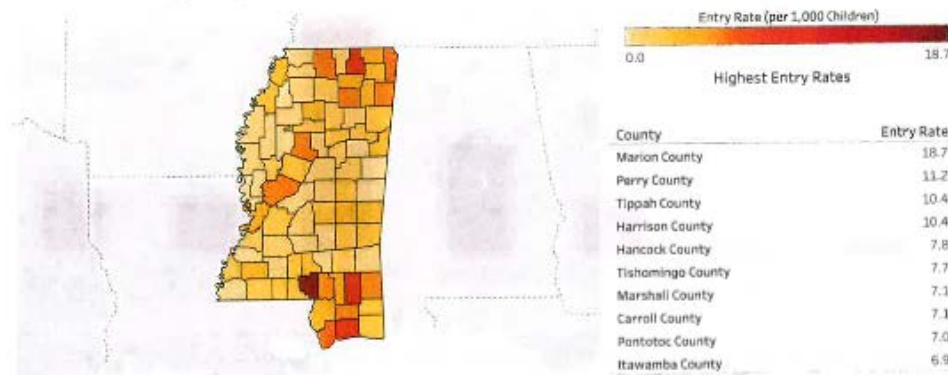
Associate Justice Dawn Beam  
Mississippi Supreme Court

# Quick Facts – Mississippi’s Foster Care

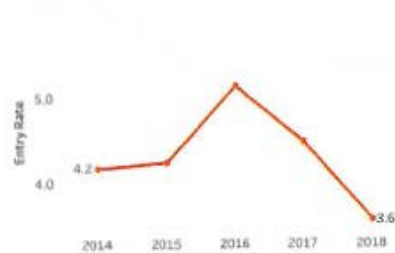
What is the flow of children in and out of foster care?



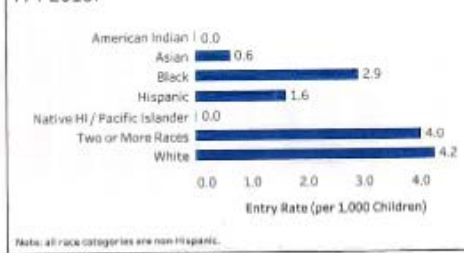
What was the entry rate (per 1,000 children) in FFY 2018 and which counties had the highest rates?



How has the entry rate changed over time?



How did the entry rate vary by race and ethnicity in FFY 2018?



Not for distribution. For informational purposes only.  
 Note: All years are federal fiscal years (FFY). Some information may not be available for states with data-quality issues with one or more of their AFCARS files. Counties and race/ethnicity groups with low child populations may have high entry rates. This indicates that the "risk" of entry is high, although the number of children placed may be relatively low.  
 Source: state semi-annual AFCARS foster care submissions.  
 Date: September 20, 2019

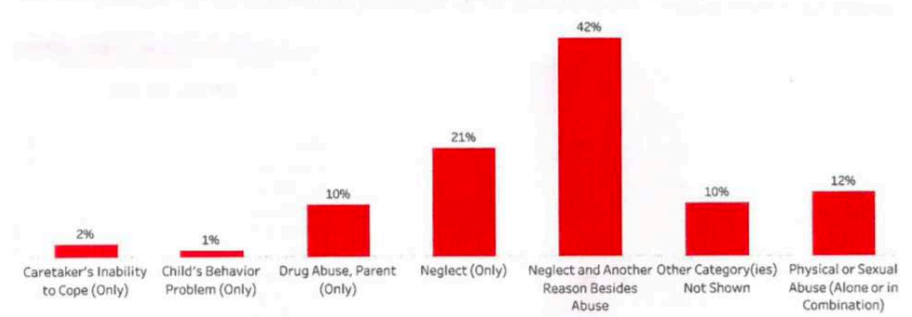
How long did children entering care in FFY 2015 stay in care?



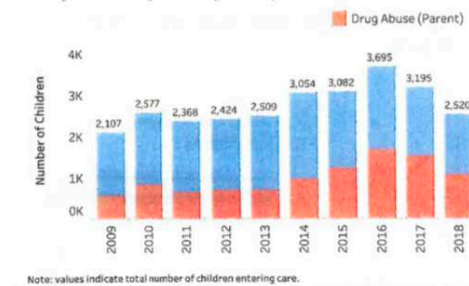
Among children entering foster care in recent years, how long did it take for half of them to exit?

| Entry Year | Days | Months |
|------------|------|--------|
| FFY 2013   | 359  | 11.8   |
| FFY 2014   | 346  | 11.4   |
| FFY 2015   | 365  | 12.0   |

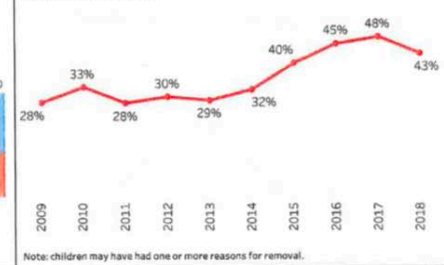
What were the reasons associated with children’s entry into foster care in FFY 2018?



Among children entering care in the last ten years, how many had "drug abuse (parent)" as a removal reason?



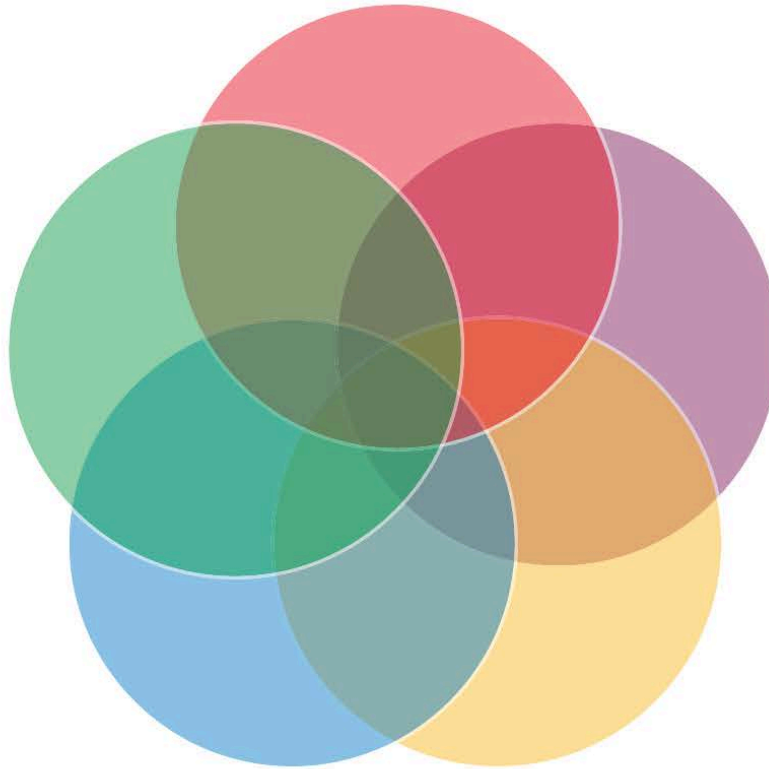
What proportion of children entering care in the last ten years had "drug abuse (parent)" as a removal reason?



Not for distribution. For informational purposes only.  
 Note: All years are federal fiscal years (FFY). Some information may not be available for states with data-quality issues with one or more of their AFCARS files. Counties and race/ethnicity groups with low child populations may have high entry rates. This indicates that the "risk" of entry is high, although the number of children placed may be relatively low.  
 Source: state semi-annual AFCARS foster care submissions.  
 Date: September 20, 2019

# Mississippi Family First Initiative

-  JUDICIARY
-  NON-PROFIT AND NON-GOV'T AGENCIES
-  GOVERNMENT
-  INDUSTRY
-  FAITH-BASED



Collectively come together  
as a state

Identify resources  
and gaps in services

Determine priority  
for change

Develop an action plan

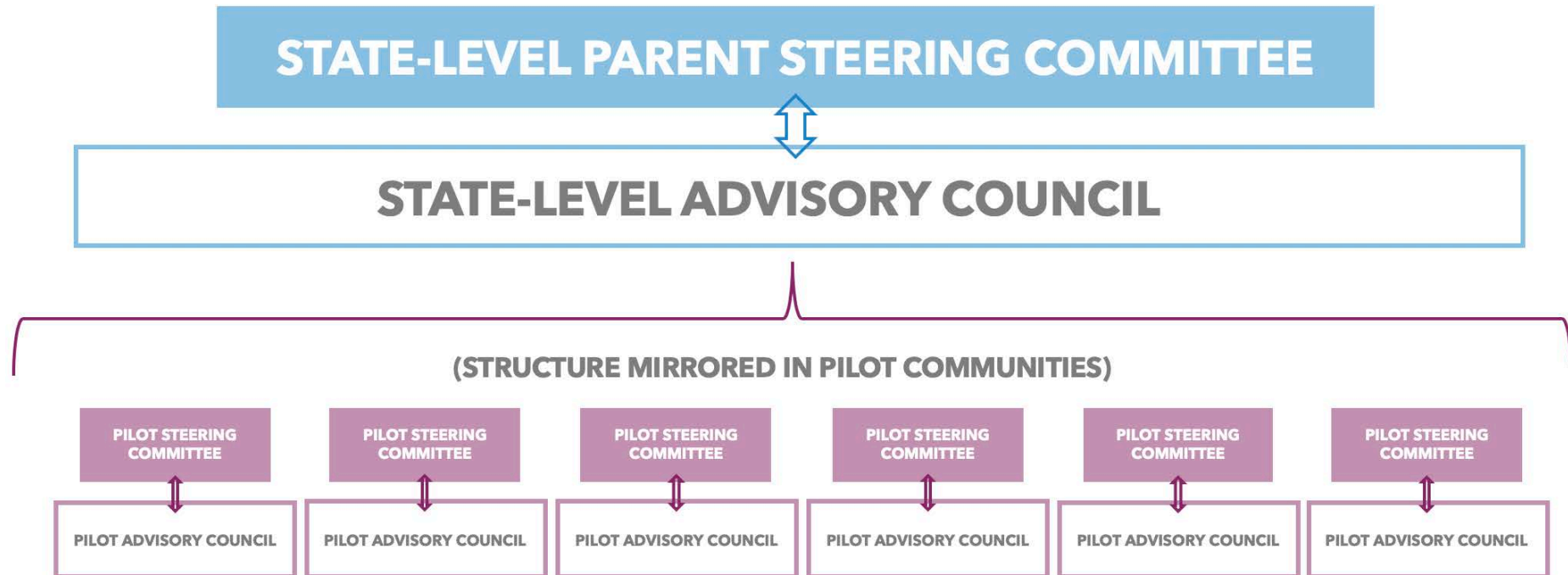
Enhance collaboration  
across state sectors

# *Getting People to the Table*

- Dream meeting – June 2018
- Steering Committee meetings – June to July 2018
- Kick-off Event – July 30, 2018
- SWOT Analysis within each pilot county – August to September 2018
- Quarterly meetings

# Keeping Up the Energy – It's About Adjustments

## INITIATIVE STRUCTURE





# MISSISSIPPI FAMILY FIRST INITIATIVE

## **OUR VISION**

ESTABLISH *SAFE, STABLE, AND SELF-SUFFICIENT FAMILIES*  
FOR MISSISSIPPI'S CHILDREN:

*ONE FAMILY AND ONE COMMUNITY AT A TIME*