



**YOUTH  
EMPOWERMENT  
PROJECT**

---

## **Violence & Behavioral Health Interventions: Children & Adolescents**

## **Introduction and Overview of YEP**

**Darrin McCall, LCSW  
Chief Program Officer**

# ABOUT YEP

## Mission

**YEP's mission is to engage individuals ages 7 and up, through community-based education, mentoring, employment readiness, and enrichment programs to help them develop skills and strengthen ties to family and community.**

## Vision

**YEP envisions a community where all people have access to the opportunities, skills, resources, and relationships they need to actualize their potential.**

## Core Purpose

**YEP's core purpose is to empower young people to improve their lives and the lives of others.**



# YEP'S CORE VALUES

## Accountability

YEP is responsible to its participants, families, community, donors, and stakeholders.

## Respect

YEP believes that all people have value and should be treated with dignity.

## Progress

YEP believes in ongoing learning and innovation.

## Integrity

YEP is honest and sincere.

## Kindness

YEP is caring and generous.



# HISTORY OF YEP

## YEP BEGINS



## YEP ENRICHES BEGINS



## YEP WORKS BEGINS



## YEP EXPANDS TO NEW ORLEANS EAST



2003

2004

2009

2012

2022

2005

2006

2014

2023

Hurricane Katrina

Act 1225 ordered the overhaul of Louisiana's juvenile justice system

## YEP EDUCATES BEGINS



## YEP PURCHASES YOUTH CENTER AND EXPANDS TO ST. CHARLES PARISH



## YEP PURCHASES OFFICES AND STORES

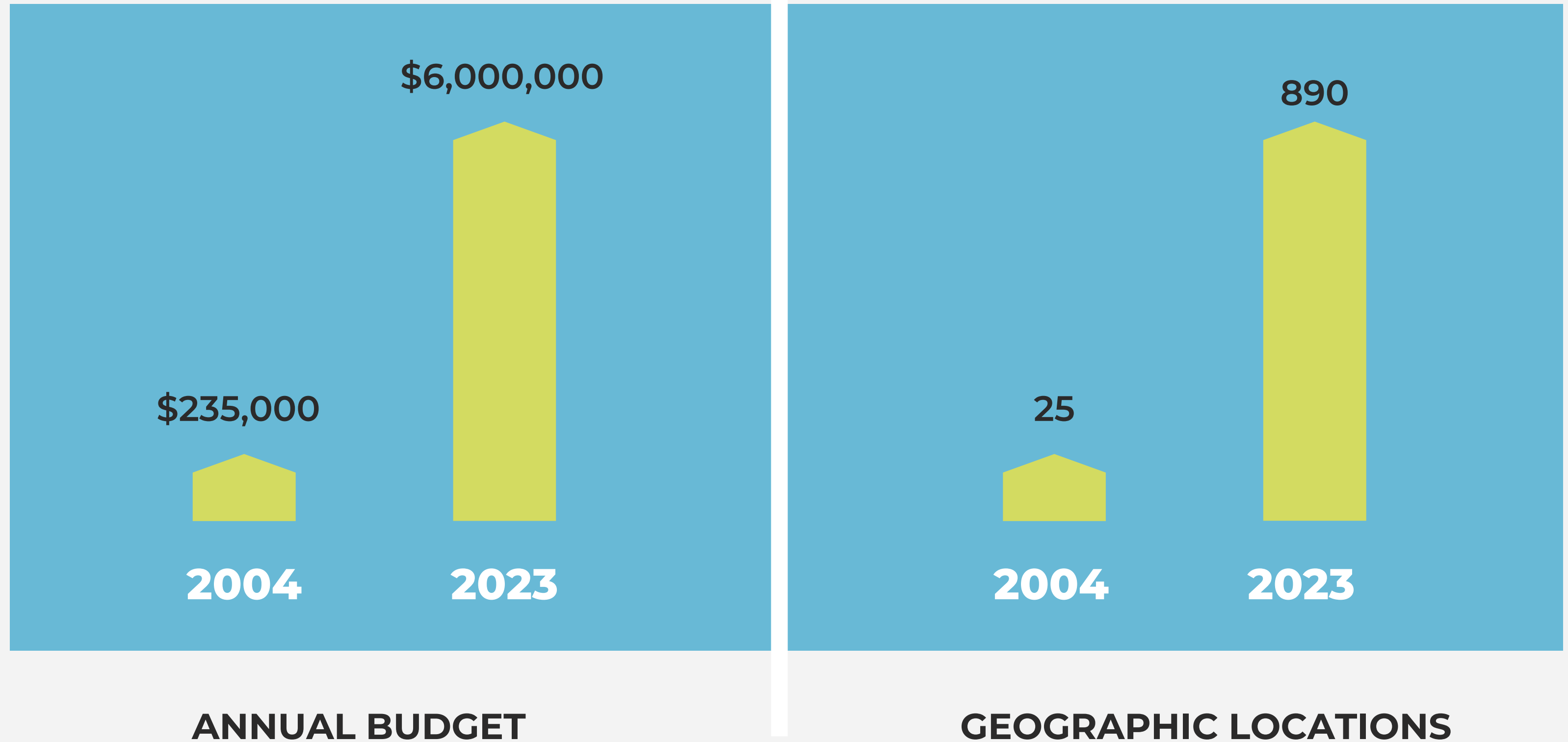


## YEP TODAY



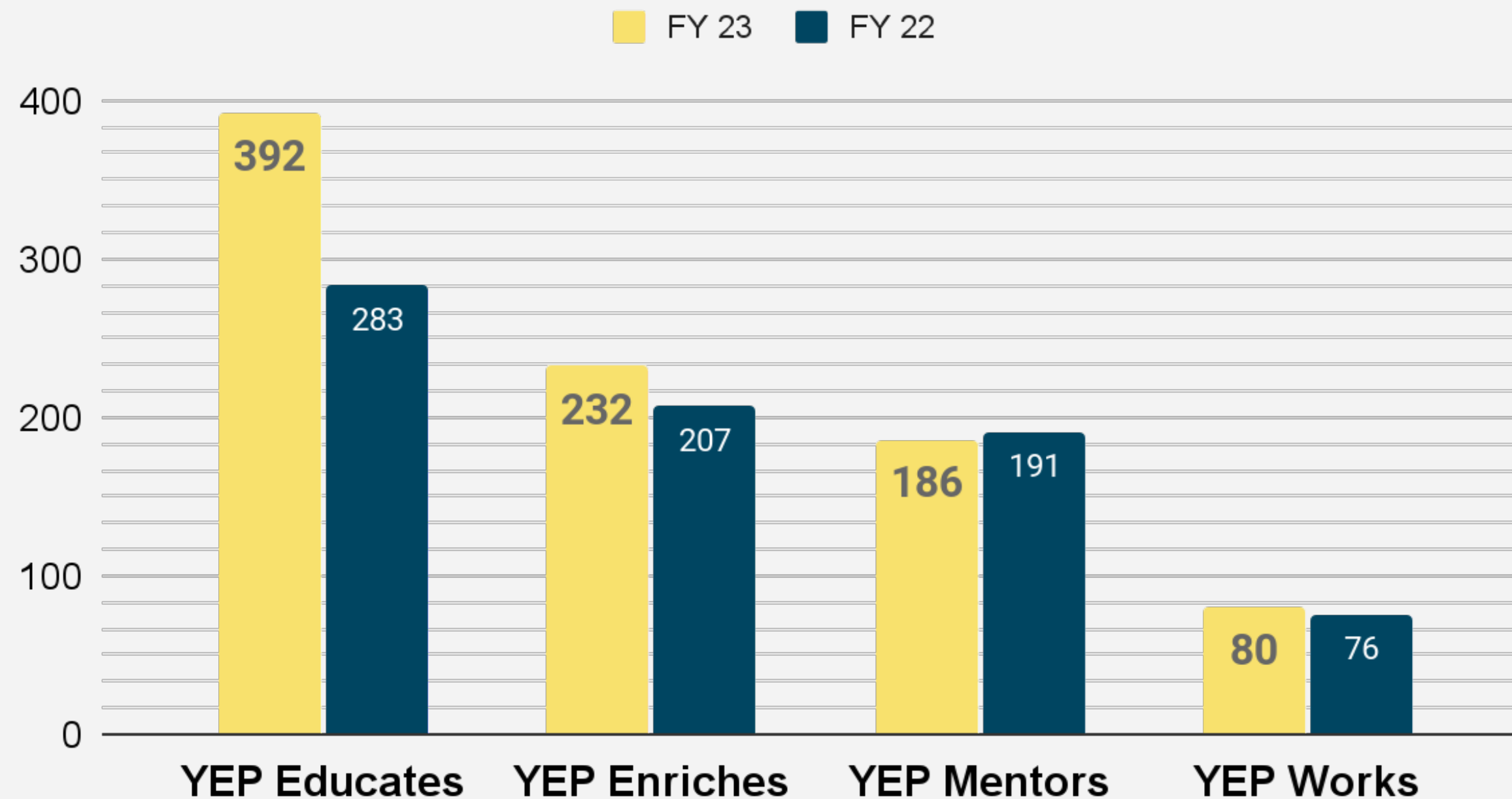
# YEP'S GROWTH: 2004-2023

---



# Program Enrollment 2022 → 2023

YEP Enrollment, By Program



# YEP's FY23 Participants

**88%** African American

**47%** Male      **53%** Female      **<1%** Other

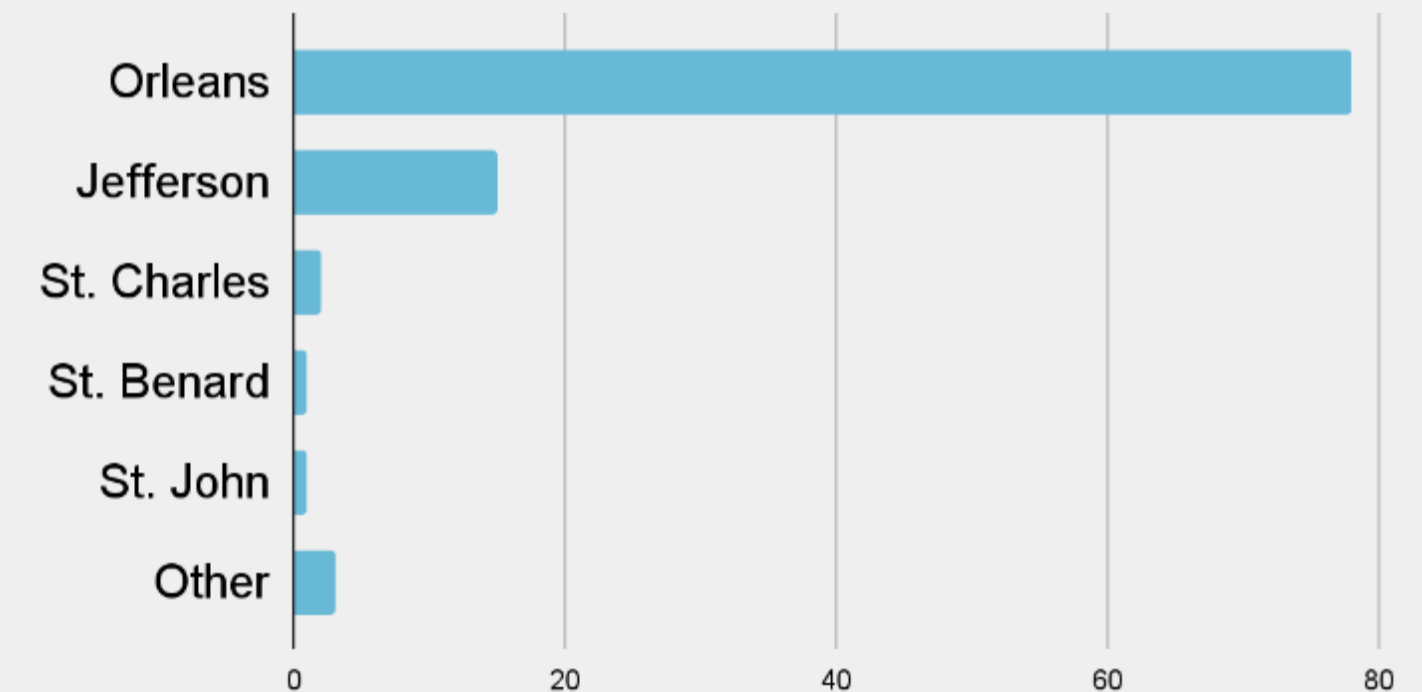
**14%** individuals indicated prior Justice System involvement at intake.

**69%** participants lived in households headed by a single mother

**82%** households below the poverty line

**95%** households qualify as low income (at or below 200% poverty level)

YEP Participants Parish of Residence



# THE CHALLENGES OF TODAY

**80%**

Over the past two years, **truancy rates** in New Orleans have risen as much as 80%.

**34%**

In New Orleans, only 34% of 3rd graders are currently **reading on grade level**.

**50%**

In Orleans Parish, 50% of kids ages 11-19 report that **someone close to them has been murdered**.

**51%**

In New Orleans, 37% of all children and 51% of Black **children live in poverty**.





# YEP's Programs

# YEP Mentors

## Program overview:

YEP Mentors is a community-based mentoring program for system-involved young people, ages 8 to 21. Youth participants are referred to YEP by the Louisiana Office of Juvenile Justice or the local court system. Mentoring services are delivered by YEP Youth Advocates, trained and salaried staff who provide intensive, culturally competent and non-judgmental case management and mentoring services to young people as well as supplemental support to their families.

## Locations:

Central City: 1600 Oretha Castle Haley Blvd.

New Orleans East: 12000 Hayne Blvd.

St. Charles Parish: 171 Keller Dr. (Hahnville, LA)



# YEP Enriches

## Program overview:

YEP Enriches is an out-of-school time enrichment program for young people, ages 7 to 18. Our year-round, free programming includes an Afterschool Program and a Summer Camp. These programs provide youth with academic support, physical activity, music, drama and arts instruction, and social-emotional support. YEP Enriches also runs Louisiana's only Camp Mariposa, a national addiction prevention and mentoring program for youth who have been impacted by substance abuse in their families.

## Locations:

Central City: 1529 Oretha Castle Haley Blvd.

New Orleans East: 12000 Hayne Blvd.



# YEP Educates

## Program overview:

YEP Educates is an adult education program that provides an alternative and flexible pathway for students, ages 16 and up, to build literacy skills, earn their high school equivalency (HiSET), and transition into postsecondary education and advanced training. The goal of the program is to increase the life opportunities and earning potential for adult learners of all ages who did not graduate from high school.

## Locations:

Mid City: 139 S. Broad St.

West Bank: 1111 Newton St.

New Orleans East: 12000 Hayne Blvd.



# YEP Works

## Program overview:

YEP Works is a work-based learning program that engages young people between the ages of 16 and 24. Participants earn hourly stipends while developing social-emotional competencies and gaining transferable employment skills. YEP Works operates a full-service bike shop and thrift store, which serve as ideal training locations for young people to practice the skills they learn in the program. YEP Works participants earn a Retail Industry Fundamentals credential through the National Retail Federation.

## Locations

Central City: 1604B Oretha Castle Haley Blvd.

New Orleans East: 12000 Hayne Blvd. (starting fall 2023)



# YEP Works Shops

## Bike Works

1604A Oretha Castle Haley Blvd.



## Thrift Works

1626 Oretha Castle Haley Blvd.



# YEP's Programming Sites



# MEETING THE NEEDS OF YOUNG PEOPLE

Trusting  
Relationships

Low Barrier  
Access

“Always A  
YEP’er”

Flexibility and  
Adaptability

Serving Youth In their  
Communities



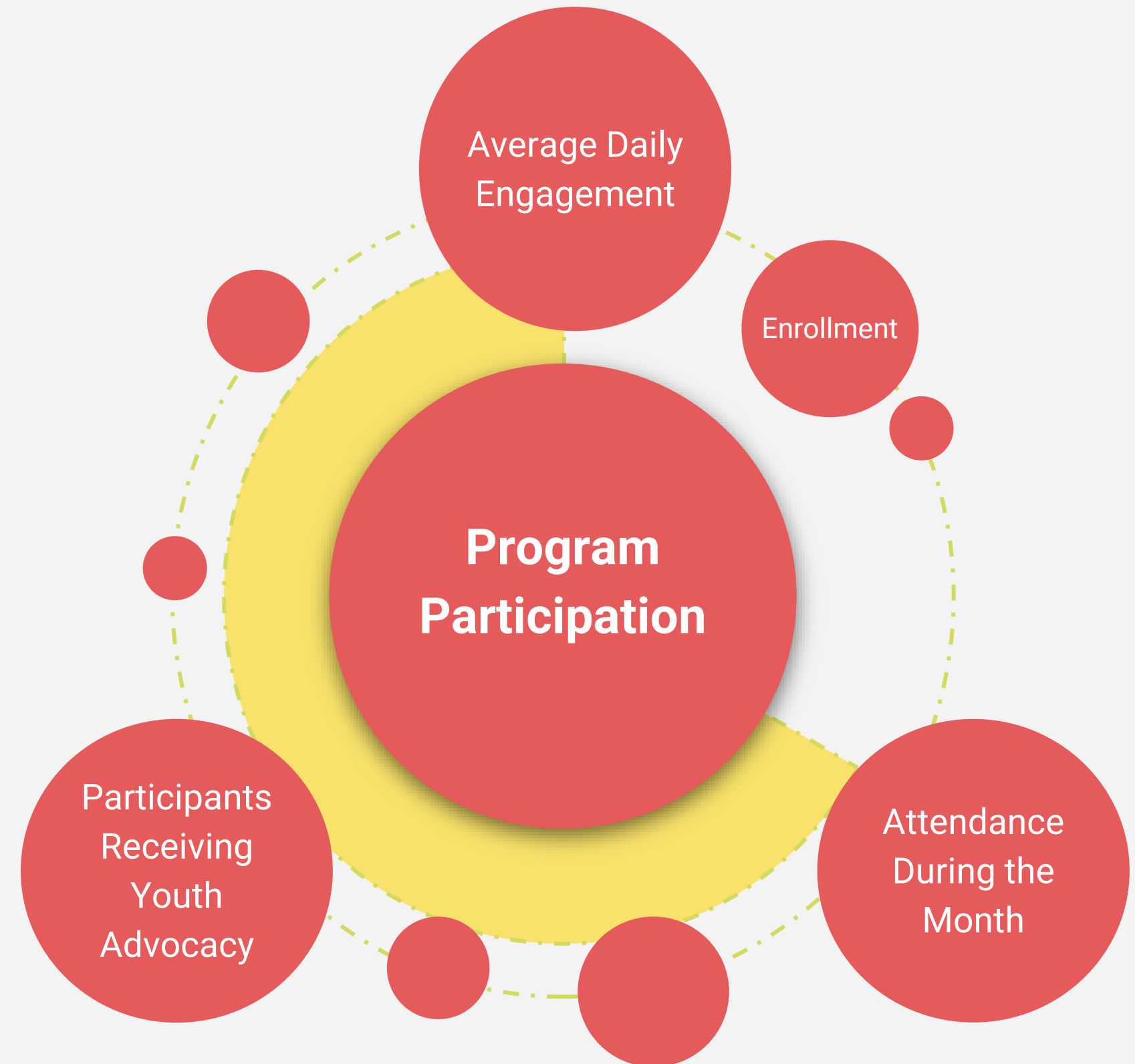
# ADDRESSING THE NEEDS OF TODAY

- **Addressing the academic needs young people engaged in K-12 schools**, by hiring a FT Educational Coordinator.
- **Providing on-site grief and trauma focused counseling services**, by partnering with Children's Bureau New Orleans (CBNO)
- **Expanded YEP's programs and services to New Orleans East**, by partnering with Educators for Quality Alternatives (EQA)



# How do we measure our impact?

- ❑ Program Completion
- ❑ Program Participation
- ❑ Client Satisfaction
- ❑ Skills Growth
- ❑ Emotional Wellbeing





# BY THE NUMBERS

---

8,500+

Over the past 19 years, YEP has engaged **over 8,500 young people** through our programs. Today, YEP serves an average of 800 young people each year.

1,500+

Since 2004, YEP has provided **more than 1,500 young people with one-on-one mentoring** and youth advocacy services.

580+

Since 2006, when YEP Educates began, more than **580 students have earned their high school equivalency diploma** through YEP Educates.

360+

Since 2012, YEP's employment readiness program has **connected more than 360 young people to jobs.**



# Snapshot: 2023 Impact



Overall participants served



Participants reported they were satisfied with the YEP program they participated in



Participants measurably improved their emotional wellbeing during their participation with YEP



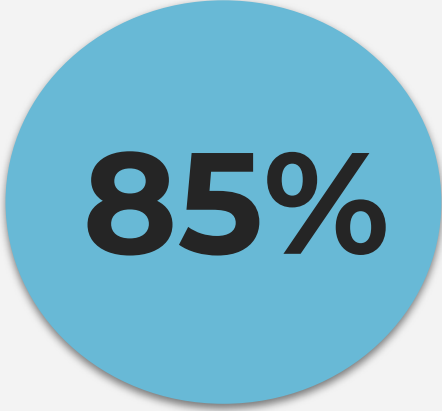
HiSET Graduates



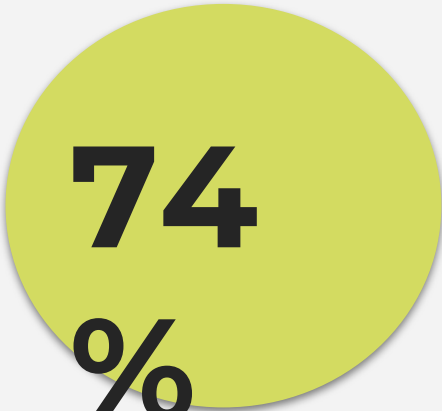
# Snapshot: 2023 Impact



YEP Works participants received a Customer service Credential



YEP's Mentoring participants increased their school attendance



YEP Educates participants made a grade level gain on the Test of Adult Basic Education



YEP Enriches participants were connected to arts and music programming



# THANK YOU

To learn more about YEP, visit [www.youthempowermentproject.org](http://www.youthempowermentproject.org)



@yepnola