

**Violence, Mental Illness, Substance Use,  
Trauma, Society  
10 Policy Considerations for BH Leaders  
(in no particular order)**

**National Dialogues on Behavioral Health  
Debra A. Pinals, M.D.  
Senior Medical and Forensic Advisor, Editor-in-Chief  
NASMHPD**



# Disclosures

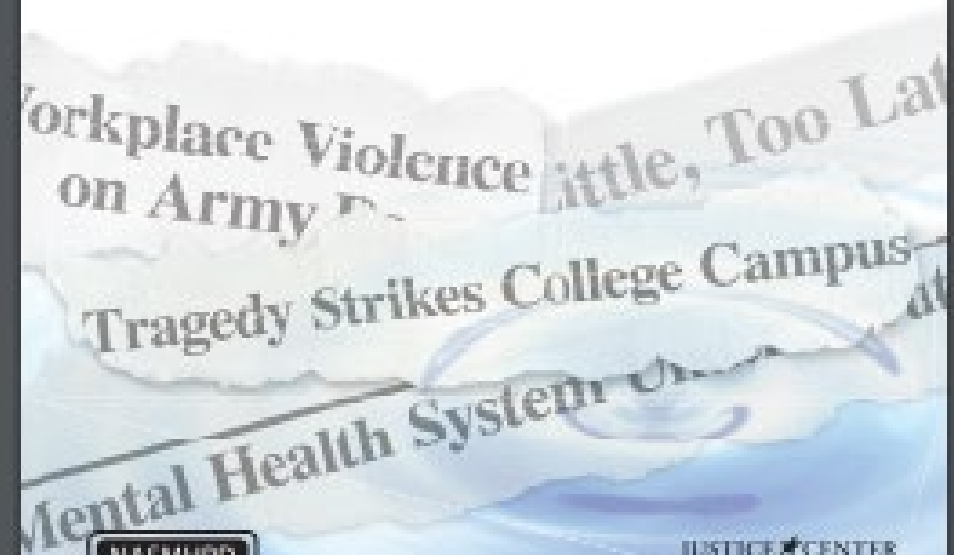
- In addition to her NASMHPD role, Dr. Pinals serves as Adjunct Clinical Professor of Psychiatry, University of Michigan and Medical Director, Behavioral Health and Forensic Programs, Michigan Department of Health and Human Services, and psychiatric expert in litigation related to systems and consults to jurisdictions, organizations and federal entities
- Dr. Pinals has no conflicts related to this presentation

#1

# LEADERSHIP AT TIMES OF ADVERSITY

# Responding to a High-Profile Tragic Incident Involving a Person with a Serious Mental Illness

A Toolkit for State Mental Health Commissioners



NASMHPD

JUSTICE CENTER  
The Council on State Governments

#2



**DO NOT BE AFRAID TO ASK HARD QUESTIONS  
TO IMPROVE**

# Man convicted in murder of group home worker

By Akilah Johnson and John R. Ellement Globe Staff, October 28, 2013, 3:07 p.m.



 LOCAL COVERAGE

 LISTEN LIVE: [BBC Newshour](#)  DON

[Home](#) // [Local Coverage](#)



   
06:05

## Report Raises Questions About Mass. Mental Health System

December 10, 2013 | By [Deborah Becker](#)



*This article is more than 9 years old.*

The Massachusetts mental health community gathers Tuesday for the second annual symposium on the safety of the state's mental health workers — an event organized in

#3

**BE AT THE POLICY TABLE TO EDUCATE**



# Being at the Table

- Education about the role of mental illness and other factors
- The limits of what mental health professionals can do
  - Which policies should BH take on
  - Which policies should BH not take on
- The importance of multidisciplinary teams and multidisciplinary educational efforts



#4

**UPLIFT THE WORKFORCE TO DO THE BEST IT  
CAN**

# Uplifting the Workforce

- Training
- Support
- Continuous quality improvement

#5

# UNDERSTAND EXPECTATIONS

# Understand Expectations

- Statutes
- Rules
- Policies
- Outside entities
  - OSHA
  - Joint Commission/CARF
  - OIG reviews

#6

**BE TRAUMA INFORMED**

# Be Trauma-Informed

- For persons served
- For staff

#7

**RELY UPON EXPERTS AND OTHERS**



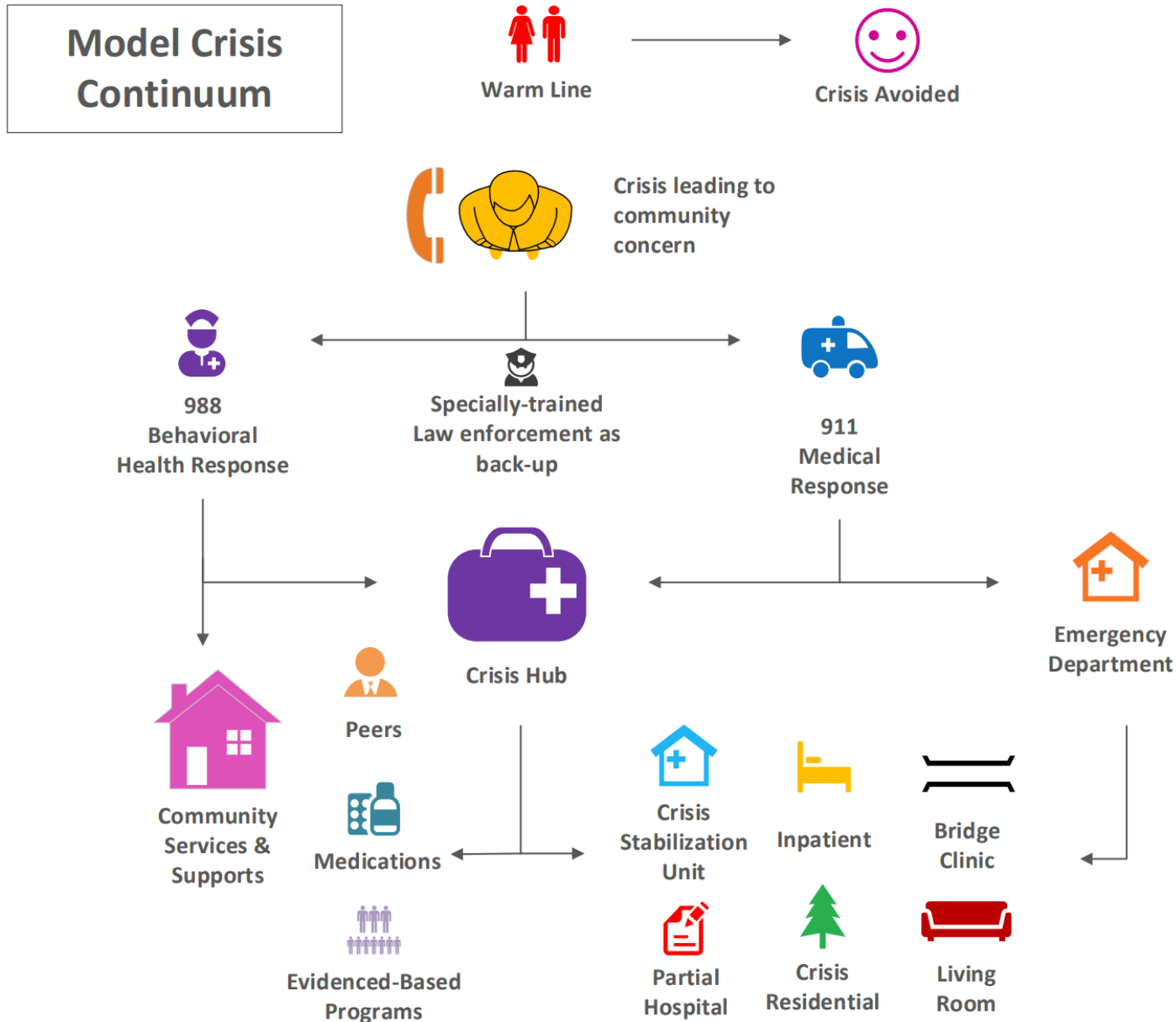
# Rely Upon Experts and Others

- Never worry alone
- It takes a village

#8

**PREPARE YOUR SERVICES TO PROVIDE PROPER TRIAGE, ASSESSMENT, AND CARE SINCE ISSUES OF VIOLENCE CAN EMERGE IN ANY SETTING**

Figure 2: Flow of an Interconnected Model Crisis Continuum



Pinal DA. Crisis Services: Meeting Needs, Saving Lives. NASMHPD 2020 <https://www.nasmhpd.org/sites/default/files/2020paper1.pdf>



NASMHPD

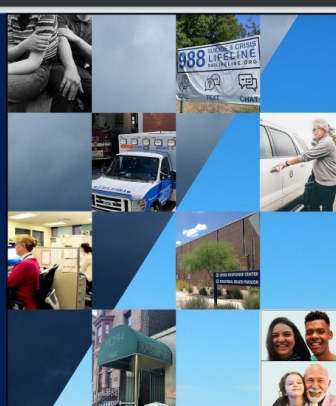
# CRISIS SERVICES

Meeting Needs,  
Saving Lives



SEPTEMBER 2020

Accessible • Interconnected • Effective • Just



## FROM CRISIS TO CARE

Building from 988 and Beyond for Better Mental Health Outcomes

NASMHPD

September 2022

A Series of 10 Technical Assistance Briefs

## READY TO RESPOND

MENTAL HEALTH  
BEYOND CRISIS  
AND COVID-19



NASMHPD

Reimagining a Sustainable and Robust Continuum of Psychiatric Care

September 2021

2023

# Connected and Strong

Strategies For Accessible and Effective  
Crisis and Mental Health Services

A Series of Ten Technical Assistance Briefs to Foster Unity and Strengthen Continuity Across Crisis Response and Treatment Systems

**SAMHSA**  
Substance Abuse and Mental Health  
Services Administration

#9

# FOSTER PARTNERSHIPS

# Criminal Justice System

- Law recognizes some individuals may not be responsible even if they committed a criminal act (e.g., seizure-related assault).
- When a person with mental illness engages in criminal behavior, it may be for the same reasons as a non-mentally ill person (“criminogenic factors”)
- Important to consider options available and basis for both violent and non-violent offenses



# Harm Reduction: Building Safety Networks

- Individual
- Family/Friends
- Peer supports
- Community at Large
- Spiritual connections
- Mental health providers
- Criminal justice partners



#10

**PRIORITIZE SELF-CARE**

# Prioritize Self-Care

- Holding hope is hard
- Crises Pass but the next hurdle will need to be surmounted



# Conclusions

- Behavioral Health leaders have an important role to play, but cannot solve the problem of societal violence alone
- Partnerships, patience, constant quality review and improvements will be key



***Thank you!***

Debra A. Pinals, M.D.

Debra.pinals@nasmhpd.org