



# From Research to Results:

*Engaging families yields positive outcomes*

Pat Hunt, Executive Director  
November 2024





**More than organizations – together *we're a movement!***

FREDLA is the only national association of family-run organizations dedicated solely to children, youth, and young adults with mental health, substance use, and multi-systems challenges, and their families.

# Our work lies within & among 5 main areas that often intersect



# Engaging Families is Everyone's Business!



# Who else says that engaging families is important?

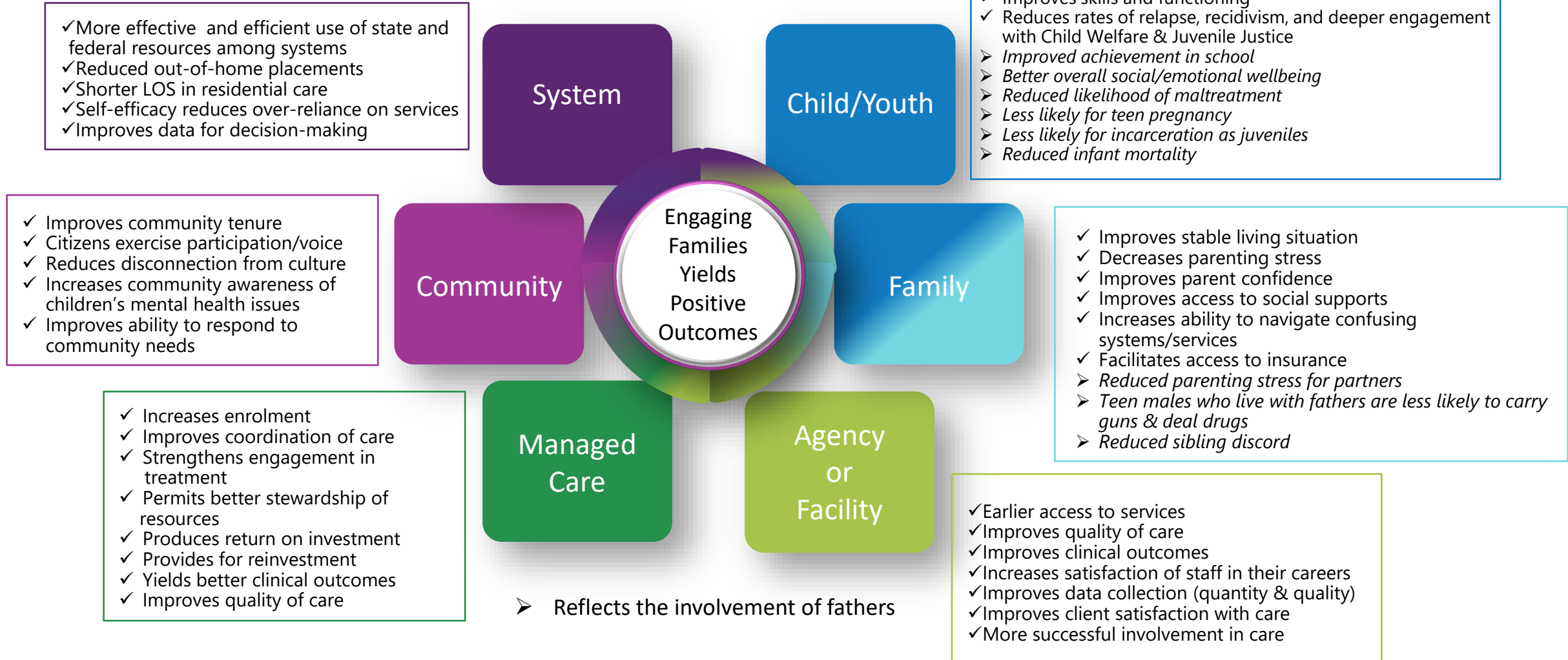
More than 65  
researchers do!

Wang Paulson Johnson Palinkas Wohlstetter Wiens  
Leslie Manion Osteen Pearson Whitney Prewett  
Salihu Gordon Fischer Law Jenkins Kuzin Levison Robst Kornosky McKay  
Claudius Prinz Bannon Ericzen Hoagwood Smith Davidson Synder DeChillo  
Miller Baker Anderson King Alio Thomas Bellin Levy Davis  
Mackean  
Affronti Wong DePedro Lambert Ferriera Tambuyzer Cecil Osher VanKammen Washington Zaro Yatchmonoff Marty VanAudenhove

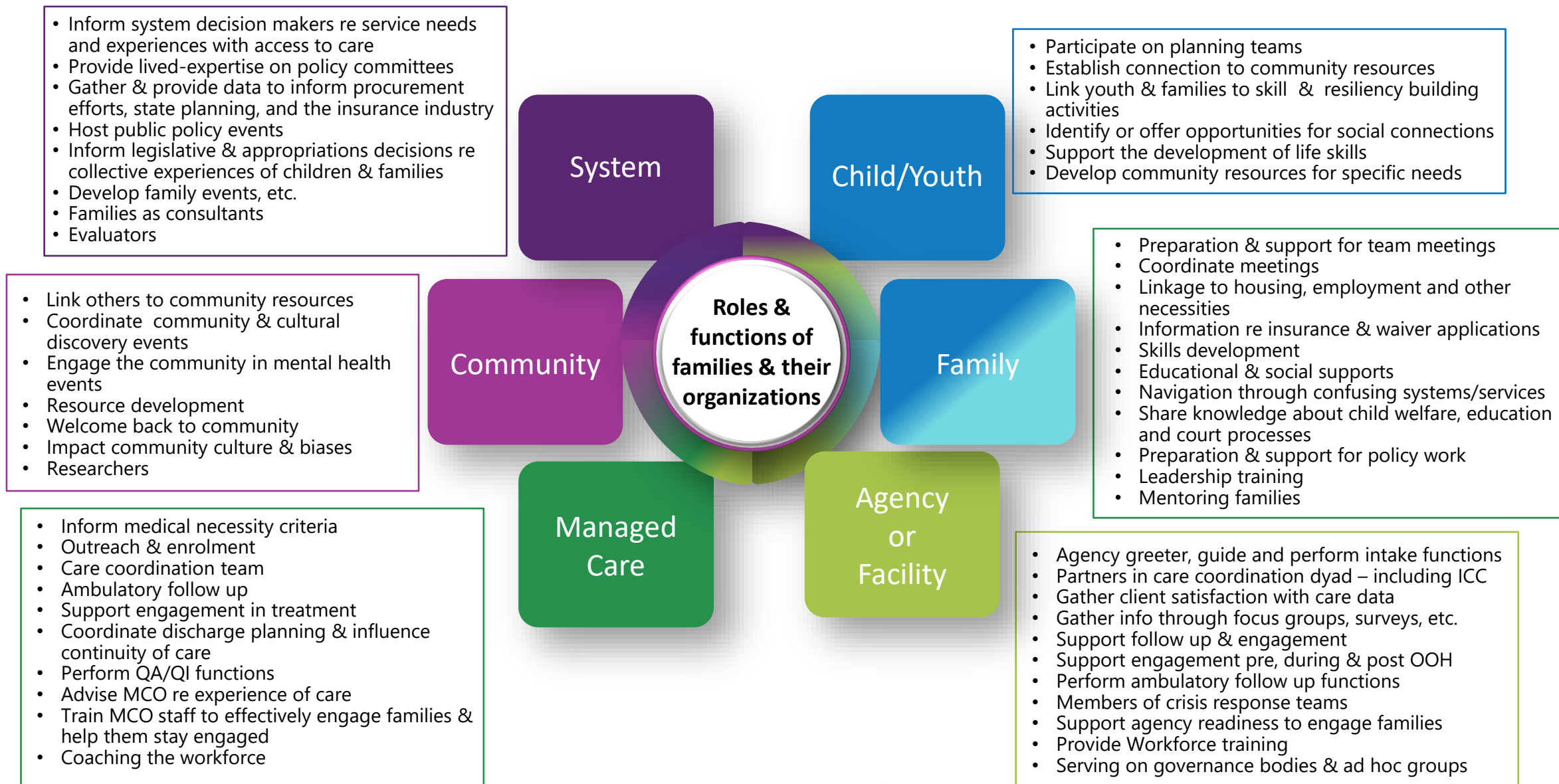


# Engaging Families

## Research Shows Positive Outcomes!



# Over 50 Functions Families Can Serve Throughout Your System





A peek at the citations

[www.fredla.org](http://www.fredla.org)



# Research

## Engagement Outcomes Graphic - Citations

- Adamsons, K., & Johnson, S. K. (2013). An updated and expanded meta-analysis of nonresident fathering and child well-being. *Journal of Family Psychology, 27*, 589-599.
- Affronti, M. L., & Levison-Johnson, J. (2009). The future of family engagement in residential care settings. *Residential Treatment for Children & Youth, 26*, 257-304.
- Alio, A. P., Mbah, A. K., Kornosky, J. L., Washington, D., Marty, P. J., Salihu, H. M. (2011). Assessing the Impact of Paternal Involvement on Racial /Ethnic Disparities in Infant Mortality Rates. *Journal of Community Health, 36*, 63-68.
- Baker-Ericzén, M. J., Jenkins, M. M., & Brookman-Frazer, L. (2010). Clinician and parent perspectives on parent and family contextual factors that impact community mental health services for children with behavior problems. *Child & Youth Care Forum, 39*, 397-419.
- Bannon, W. M., & McKay, M. M. (2005). Are barriers to service and parental preference match for service related to urban child mental health service use? *Families in Society, 86*, 30-34.
- Bellin, M. H., Osteen, P., Heffernan, C., Levy, J. M., & Snyder-Vogel, M. E. (2011). Parent and health care professional perspectives on family-centered care for children with special health care needs: Are we on the same page? *Health and Social Work, 36*, 281-290.
- Bendheim-Thomas Center for Research on Child Wellbeing and Social Indicators Survey Center. (2010). CPS involvement in families with social fathers. *Fragile Families Research Brief, 46*. Princeton, NJ and New York, NY: Bendheim-Thomas Center for Research on Child Wellbeing and Social Indicators Survey Center.
- Centre for Addiction and Mental Health (CAMH). (2004). *Putting Family-Centred Care Philosophy into Practice*. Report by the Community Research, Planning, and Evaluation Team. Retrieved from [http://www.camh.ca/en/hospital/Documents/www.camh.net/Care\\_Treatment/Community\\_and\\_social\\_supports/Social\\_Support/FCCI/FCC\\_Better\\_Practices\\_PDF.pdf](http://www.camh.ca/en/hospital/Documents/www.camh.net/Care_Treatment/Community_and_social_supports/Social_Support/FCCI/FCC_Better_Practices_PDF.pdf)
- Davidson, J., Wiens, S., & Anderson, K. (2010). Creating a provincial family council to engage youth and families in child & youth mental health systems. *Journal of the Canadian Academy of Child and Adolescent Psychiatry, 19*, 169.
- Davis, C., Claudius, M., Palinkas, L., Wong, J., & Leslie, L. (2012). Putting families in the center: family perspectives on decision making and ADHD and implications for ADHD care. *Journal of Attention Disorders, 16*, 675-684.

# Research

- Dempsey, I., & Keen, D. (2008). A review of processes and outcomes in family-centered services for children with a disability. *Topics in Early Childhood Special Education, 28*, 42-52. Retrieved from <http://tec.sagepub.com/content/28/1/42.full.pdf+html>
- Ferreira, K. (2011). Actualizing empowerment: developing a framework for partnering with families in system level service planning and delivery. *Graduate Theses and Dissertations*. Retrieved from : <http://scholarcommons.usf.edu/etd/3103>
- Ferreira, K., Hodges, S., & Slaton, E. (2013). The promise of family engagement: an action plan for system-level policy and advocacy. In McDonald Culp, A. (Eds.), *Child and Family Advocacy* (pp. 253-268). Springer New York.
- Fischer, F. (2000). *Citizens, experts, and the environment: the politics of local knowledge* . Durham and London: Duke University Press.
- Hoagwood, K. E. (2005). Family-based services in children's mental health: a research review and synthesis. *Journal of Child Psychology and Psychiatry, 46*, 690-713.
- Institute for Patient and Family-Centered Care. (2009). *Advancing the practice of patient-and family- centered care in primary care: how to get started*. Retrieved from: <http://www.ipfcc.org/pdf/GettingStarted-AmbulatoryCare.pdf>
- Karberg, E., Finocharo, J., & Vann, N. (2019). Father and child well-being: A scan of current research. National Responsible Fatherhood Clearinghouse. <https://fatherhood.gov>
- Koren, P. E., Paulson, R. I., Yatchmonoff, D., Gordon, L., & DeChillo, N. (1997). Service coordination in children's mental health: an empirical study from the caregiver's perspective. *Journal of Emotional & Behavioral Disorders, 5*, 162-173.
- Law, M., Rosenbaum, P., King, G., King, S., Burke-Gaffney, J., Moning-Szkut, T., Kertroy, M., Pollock, N., Viscardis, L., & Teplicky, R. (2003a). FCS Sheet 3: How does family-centred service make a difference? *CanChild Centre for Childhood Disability Research, McMaster University*. Retrieved from <http://canchild.ca/en/childrenfamilies/resources/FCSSheet3.pdf>
- MacKean, G., Spragins, W., L'Heureux, L., Popp, J., Wilkes, C., & Lipton, H. (2012). Advancing family- centered care in child and adolescent mental health: A critical review of the literature. *Healthcare Quarterly, 15*, 64-75.
- Manion, I., & Smith, E. (2011). Good things happen: Engaging families in youth mental health care. *Vanier Institute of the Family, 41*, 1-5. Retrieved from <http://www.vanierinstitute.ca/include/get.php?nodeid=730>
- Miller, G. E., & Prinz, R. J. (2003). Engagement of families in treatment for childhood conduct problems. *Behavior Therapy, 34*, 517-534.
- National Fatherhood Initiative® 2019. Father Facts: Eighth Edition. Germantown, MD: National Fatherhood Initiative®.

# Research

- Osher, T. W., van Kammen, W., & Zaro, S. M. (2001). Family participation in evaluating systems of care: family, research, and service system perspectives. *Journal of Emotional and Behavioral Disorders, 9*, 63-71.
- Robst, J., Armstrong, M., Dollard, N., Rohrer, L., Sharrock, P., Batsche, C., & Reader, S. (2013). Characteristics related to family involvement in youth residential mental health treatment. *Children and Youth Services Review, 35*, 40-46. Retrieved from <http://dx.doi.org/10.1016/j.childyouth.2012.10.004>
- Slaton, A. E., Cecil, C. W., Lambert, L. E., King, T., & Pearson, M. M. (2012). What a difference family-driven makes: stories of success and lessons learned. *American journal of community psychology, 49*, 538-545.
- Smith, J., Wohlstetter, P., Kuzin, C. A., & De Pedro, K. (2011). Parent involvement in urban charter schools: new strategies for increasing participation. *School Community Journal, 21*, 71-94.
- Tambuyzer, E., & Van Audenhove, C. (2013). Service user and family carer involvement in mental health care: divergent views. *Community Mental Health Journal, 49*, 675-685.
- Whitney, S. D., Prewett, S., Wang, Z., & Chen, H. (2018). FATHERS' IMPORTANCE IN ADOLESCENTS' ACADEMIC ACHIEVEMENT. *International Journal of Child, Youth and Family Studies, 8*(3/4), 101-126. <https://doi.org/10.18357/ijcyfs83/4201718073>

**THANK YOU**  
**for joining today's conversation!**

The background features a gradient from dark purple at the top to bright blue at the bottom. It is decorated with several large, overlapping, semi-transparent shapes in shades of blue and purple, and several thin, white, wavy lines that create a sense of movement and depth.